

Knoll Shetland Type Super Soft Wool. Fine 4-ply, 2/11.5 Nm. Available in approximately 525g or 1kg cones.



OLD GOLD



OATMEAL



CROCUS



GERANIUM



AQUAMARINE



ECRU



CAMEL



VIOLA



PEONY



ROBINS EGG



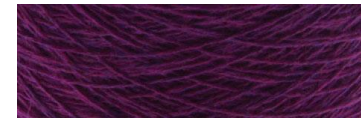
SILVER GREY



DONKEY



ORCHID



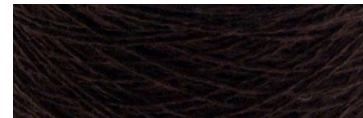
LOGANBERRY



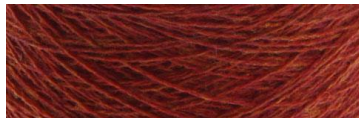
CORNFLOWER



FLANNEL GREY



CONKER



SAFFRON



PARMA



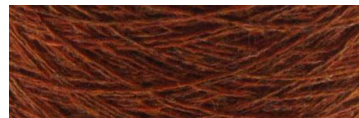
PEACOCK



OXFORD



SLOE



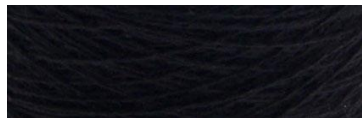
EMBER



VENETIAN



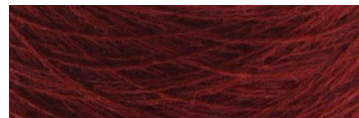
DENIM



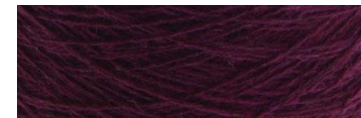
BLACK



PRUSSIAN



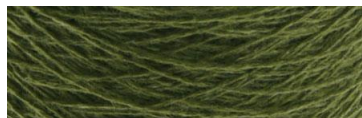
BOKHARA



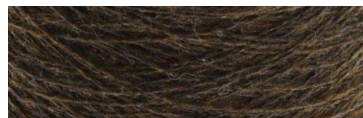
PLUM



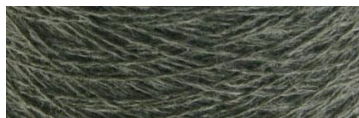
INDIGO



DARK APPLE



SCOTS PINE



HERON



CLOVER LEAF



TUNDRA